

ACLS Rhythm Test

****ASSUME PATIENT HAS A PULSE UNLESS OTHERWISE INDICATED****

1. Patient does **NOT** have a pulse with this rhythm.



- a. Ventricular fibrillation
- b. Supraventricular tachycardia (SVT)
- c. Ventricular tachycardia
- d. Atrial flutter

2.



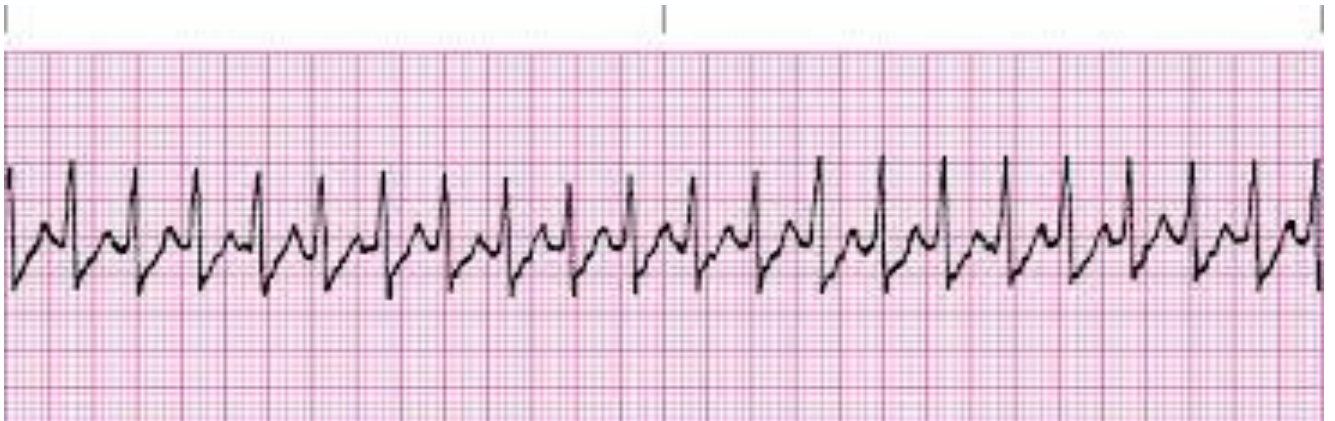
- a. First degree AV block
- b. Sinus bradycardia
- c. Normal sinus rhythm
- d. Second degree AV block Type I

3.



- a. Second degree AV block Type 2
- b. First degree AV block
- c. Second degree AV block Type 1
- d. Third degree AV block (Complete AV block)

4.



- a. Supraventricular tachycardia
- b. Ventricular tachycardia
- c. Sinus tachycardia
- d. Atrial flutter

5. Patient does **NOT** have a pulse with this rhythm.



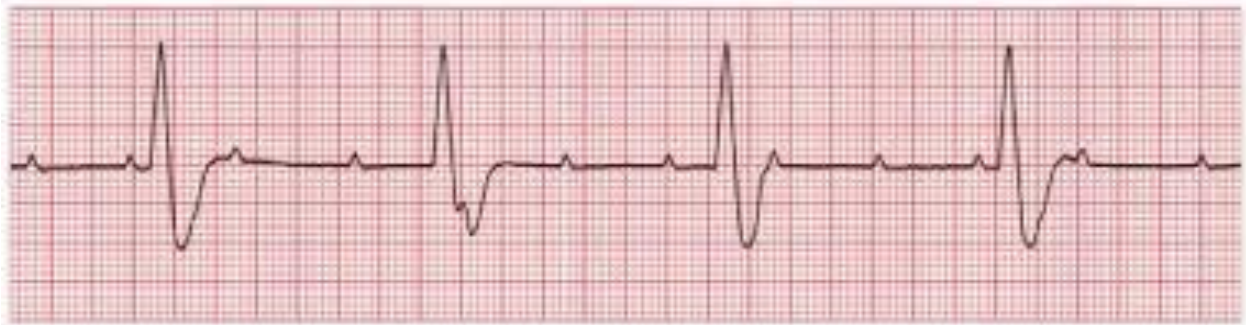
- a. Normal sinus rhythm
- b. Ventricular fibrillation
- c. Ventricular tachycardia
- d. Third degree AV block (Complete AV block)

6.



- a. First degree AV block
- b. Atrial fibrillation
- c. Ventricular fibrillation
- d. Atrial flutter

7.



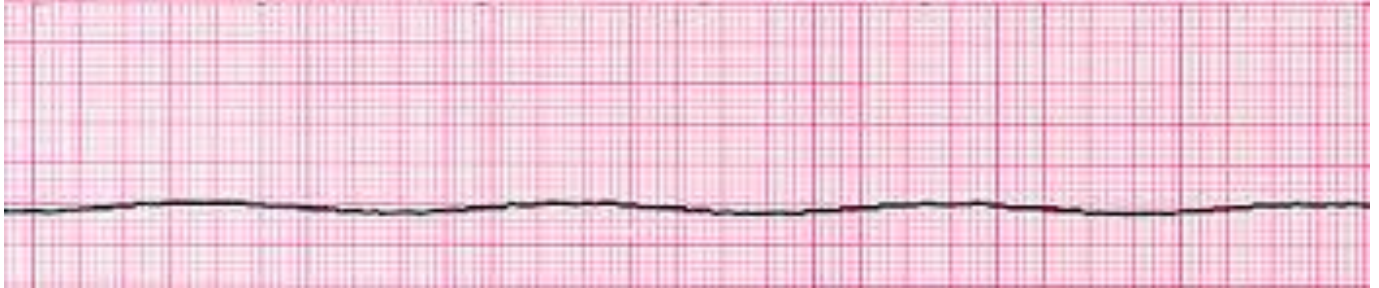
- a. Third degree AV block (Complete AV block)
- b. First degree AV block
- c. Second degree AV block Type I
- d. Second degree AV block Type II

8. Patient does **NOT** have a pulse with this rhythm.



- a. Normal sinus rhythm
- b. Pulseless electrical activity (PEA)
- c. Sinus bradycardia
- d. First degree AV block

9. Patient does **NOT** have a pulse with this rhythm.



- a. Asystole
- b. Ventricular fibrillation
- c. Pulseless electrical activity (PEA)
- d. Third degree AV block (Complete AV block)

10.



- a. Second degree AV block Type II
- b. Normal sinus rhythm
- c. Second degree AV block Type I
- d. First degree AV block

11.



- a. Third degree AV block (Complete AV block)
- b. Atrial fibrillation
- c. Ventricular fibrillation
- d. Atrial flutter

12.



- a. Second degree AV block Type I
- b. Third degree AV block (Complete AV block)
- c. Second degree AV block Type II
- d. First degree AV block

13.



- a. Atrial fibrillation
- b. Sinus tachycardia
- c. Supraventricular tachycardia (SVT)
- d. Atrial flutter

14.



- a. Pulseless electrical activity (PEA)
- b. First degree AV block
- c. Sinus bradycardia
- d. Normal sinus rhythm

References

<http://www.alivecor.com>
<http://www.quiz.biz>
<https://matthewheron.wordpress.com>
<https://www.studyblue.com>
<http://pixgood.com>
<http://studentsofmedicineplus.weebly.com>
<http://highered.mheducation.com>
<http://www.nursingceu.com>
<http://www.aclscertification.com>
<http://www.ambulancetechnicianstudy.co.uk>